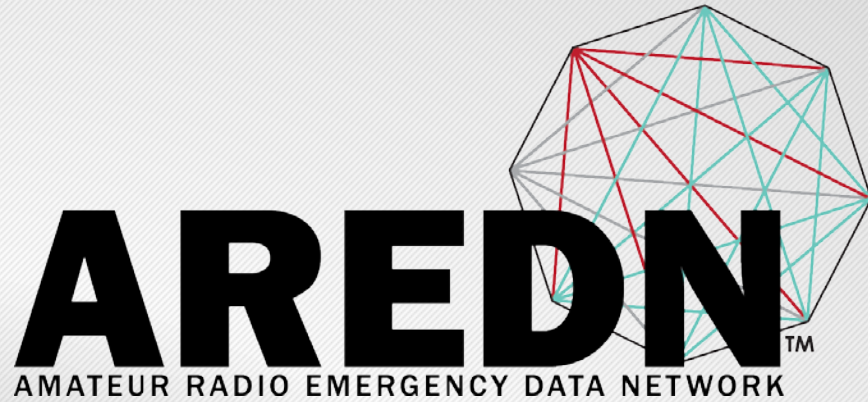






**AREION™**  
AMATEUR RADIO EMERGENCY DATA NETWORK



# Network Planning

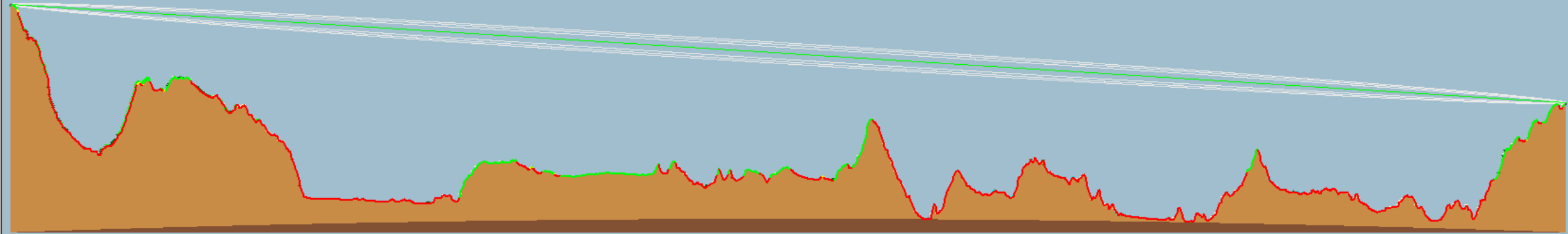
Hamvention 2017 – Booth 1001  
Greene County Fairgrounds, Xenia, OH  
May 19 - 21, 2017



# Identify



- Required coverage area (ex: San Diego County)
- Specific locations requiring access (ex: Escondido High School)
- Suitably elevated locations for the “backbone” (RM Link Analysis - Palomar to Otay)



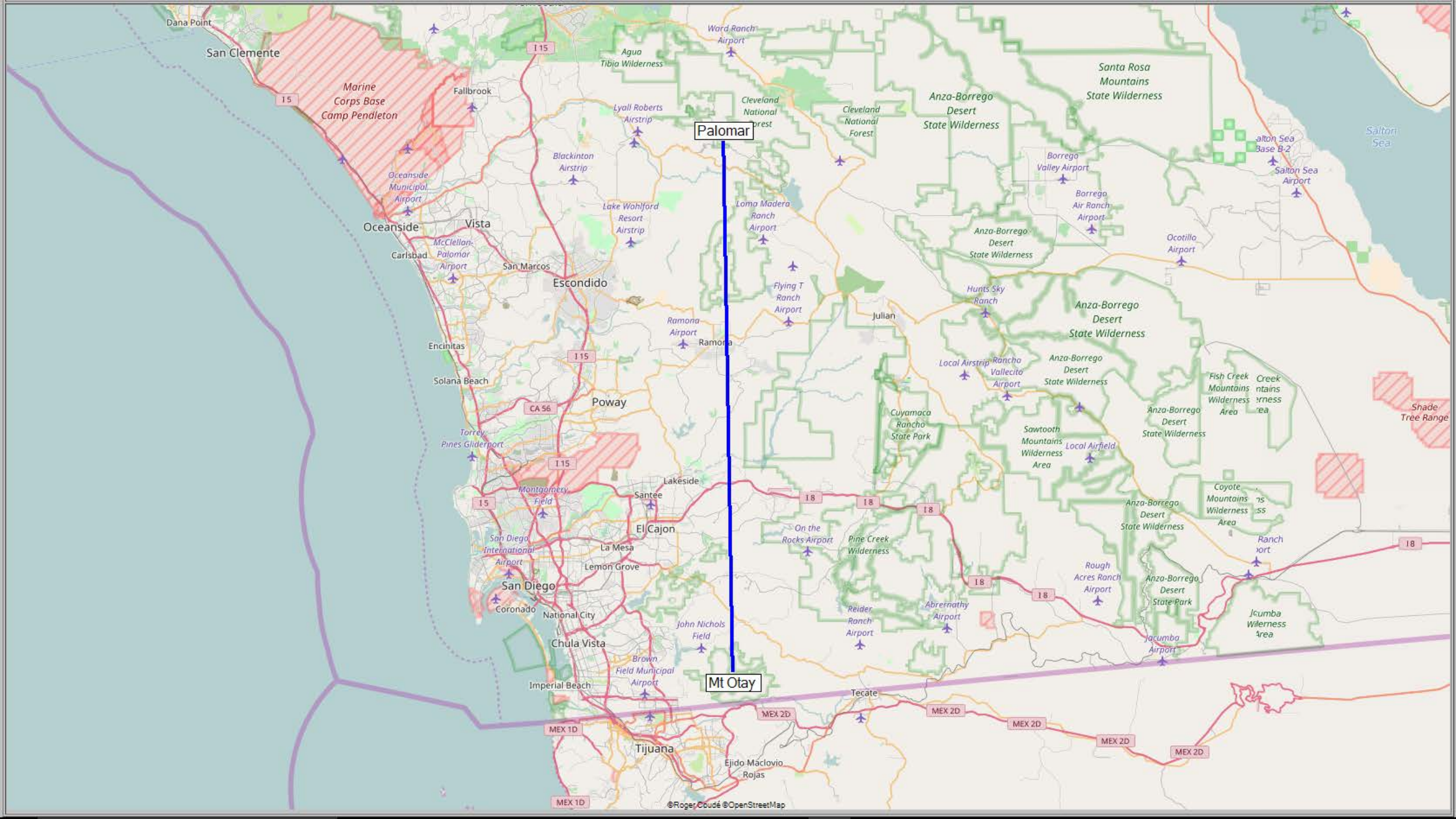
**Palomar to Otay 3.5GHz\***

<a href="#">Palomar</a> (1)		<a href="#">Mt Otay</a> (2)	
Latitude	33.309816 °	Latitude	32.600818 °
Longitude	-116.855457 °	Longitude	-116.840868 °
Ground elevation	1693.4 m	Ground elevation	1025.9 m
Antenna height	10.0 m	Antenna height	10.0 m
Azimuth	179.01 TN   167.21 MG °	Azimuth	359.01 TN   347.35 MG °
Tilt	-0.84 °	Tilt	0.13 °

<b>Radio system</b>		<b>Propagation</b>	
TX power	22.43 dBm	Free space loss	141.22 dB
TX line loss	0.50 dB	Obstruction loss	-0.38 dB
TX antenna gain	26.00 dBi	Forest loss	1.00 dB
RX antenna gain	26.00 dBi	Urban loss	0.00 dB
RX line loss	0.50 dB	Statistical loss	6.36 dB
RX sensitivity	-94.96 dBm	Total path loss	148.20 dB

<b>Performance</b>	
<b>Distance</b>	<b>78.849 km</b>
Precision	39.4 m
Frequency	3500.000 MHz
Equivalent Isotropically Radiated Power	62.092 W
System gain	168.39 dB
Required reliability	70.000 %
Received Signal	-74.77 dBm
Received Signal	40.89 μV
<b>Fade Margin</b>	<b>20.19 dB</b>





San Clemente

Marine Corps Base  
Camp Pendleton

Palomar

Santa Rosa  
Mountains  
State Wilderness

Oceanside

Vista

Escondido

Anza-Borrego  
Desert  
State Wilderness

Carlsbad

San Marcos

Lake Wahlford  
Resort  
Airstrip

Loma Madera  
Ranch  
Airport

Borrego  
Valley  
Airport

Borrego  
Air Ranch  
Airport

Salton Sea  
Base B-2

Salton  
Sea

Encinitas

Ramona

Ramona  
Airport

Flying T  
Ranch  
Airport

Hunts Sky  
Ranch

Anza-Borrego  
Desert  
State Wilderness

Ocotillo  
Airport

Solana Beach

Poway

Ramona  
Airport

Flying T  
Ranch  
Airport

Local Airstrip

Anza-Borrego  
Desert  
State Wilderness

Anza-Borrego  
Desert  
State Wilderness

Fish Creek  
Mountains  
Wilderness  
Area

Shade  
Tree Range

Torrey  
Pines  
Gliderport

Montgomery  
Field

Lakeside

On the  
Rocks  
Airport

Local Airstrip

Anza-Borrego  
Desert  
State Wilderness

Anza-Borrego  
Desert  
State Wilderness

Fish Creek  
Mountains  
Wilderness  
Area

Shade  
Tree Range

San Diego

El Cajon

Santee

On the  
Rocks  
Airport

Local Airstrip

Anza-Borrego  
Desert  
State Wilderness

Anza-Borrego  
Desert  
State Wilderness

Fish Creek  
Mountains  
Wilderness  
Area

Shade  
Tree Range

San Diego  
International  
Airport

La Mesa

El Cajon

On the  
Rocks  
Airport

Local Airstrip

Anza-Borrego  
Desert  
State Wilderness

Anza-Borrego  
Desert  
State Wilderness

Fish Creek  
Mountains  
Wilderness  
Area

Shade  
Tree Range

Coronado

National City

John Nichols  
Field

On the  
Rocks  
Airport

Local Airstrip

Anza-Borrego  
Desert  
State Wilderness

Anza-Borrego  
Desert  
State Wilderness

Fish Creek  
Mountains  
Wilderness  
Area

Shade  
Tree Range

Chula Vista

Imperial Beach

Brown  
Field  
Municipal  
Airport

On the  
Rocks  
Airport

Local Airstrip

Anza-Borrego  
Desert  
State Wilderness

Anza-Borrego  
Desert  
State Wilderness

Fish Creek  
Mountains  
Wilderness  
Area

Shade  
Tree Range

Imperial Beach

Tijuana

Brown  
Field  
Municipal  
Airport

On the  
Rocks  
Airport

Local Airstrip

Anza-Borrego  
Desert  
State Wilderness

Anza-Borrego  
Desert  
State Wilderness

Fish Creek  
Mountains  
Wilderness  
Area

Shade  
Tree Range

MEX 1D

MEX 1D

Tijuana

On the  
Rocks  
Airport

Local Airstrip

Anza-Borrego  
Desert  
State Wilderness

Anza-Borrego  
Desert  
State Wilderness

Fish Creek  
Mountains  
Wilderness  
Area

Shade  
Tree Range

MEX 1D

MEX 1D

Tijuana

On the  
Rocks  
Airport

Local Airstrip

Anza-Borrego  
Desert  
State Wilderness

Anza-Borrego  
Desert  
State Wilderness

Fish Creek  
Mountains  
Wilderness  
Area

Shade  
Tree Range

MEX 1D

MEX 1D

Tijuana

On the  
Rocks  
Airport

Local Airstrip

Anza-Borrego  
Desert  
State Wilderness

Anza-Borrego  
Desert  
State Wilderness

Fish Creek  
Mountains  
Wilderness  
Area

Shade  
Tree Range



# Determine

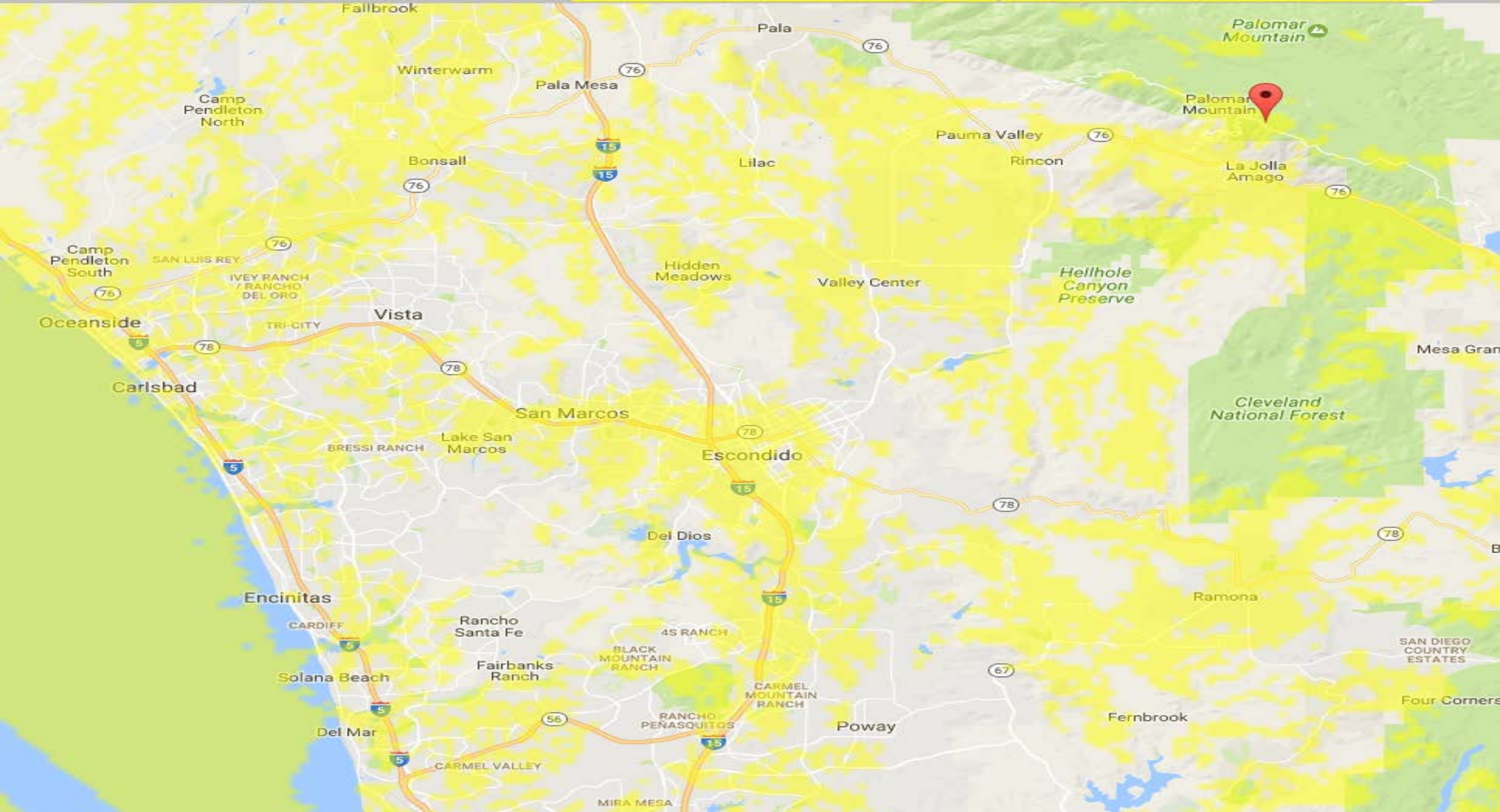


- Specific locations with direct backbone access (RM Coverage Analysis)



4.00  $\mu\text{V}$  6392  $\text{km}^2$  1219289 pop

12.65  $\mu\text{V}$  4940  $\text{km}^2$  793041 pop

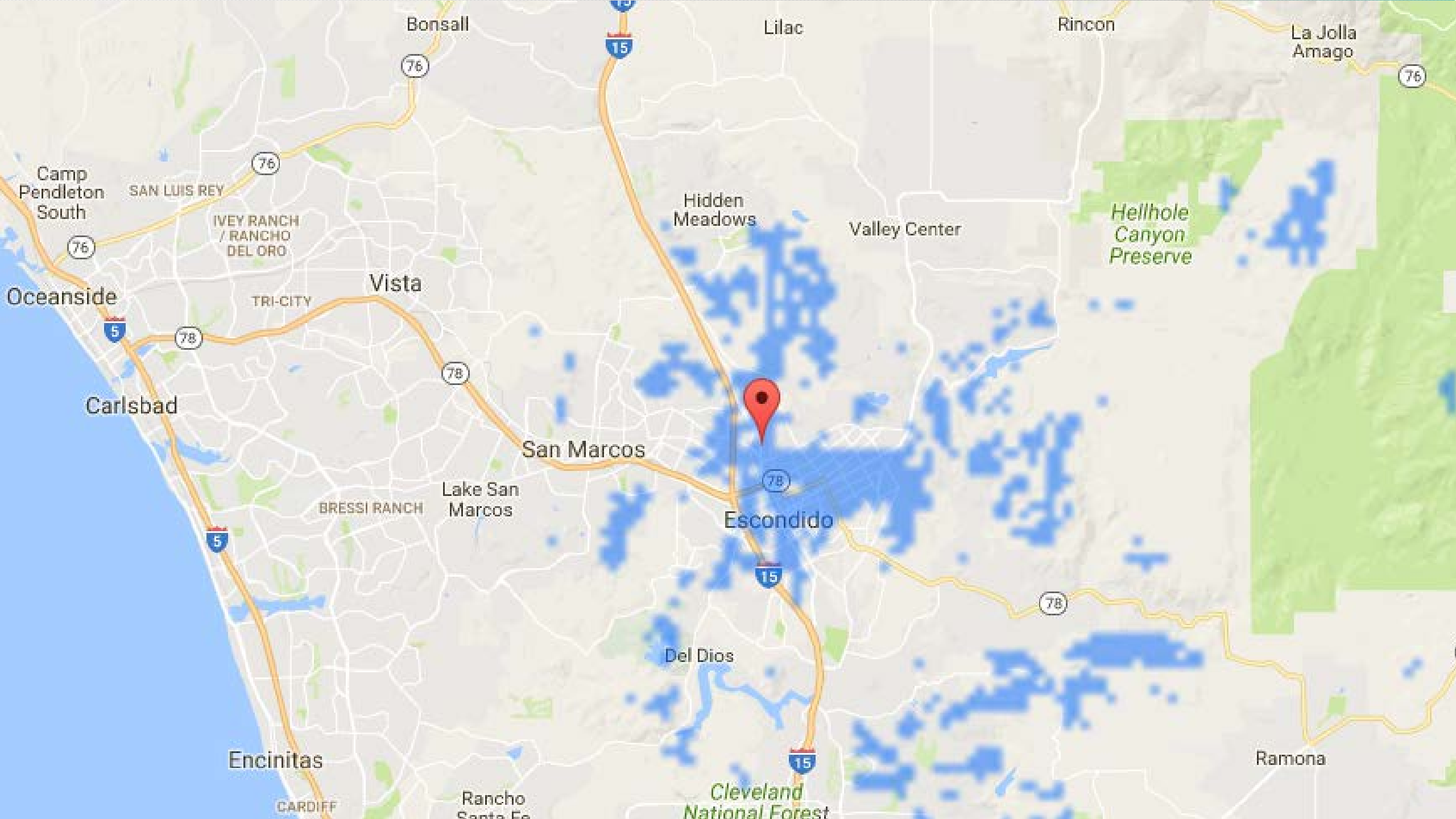




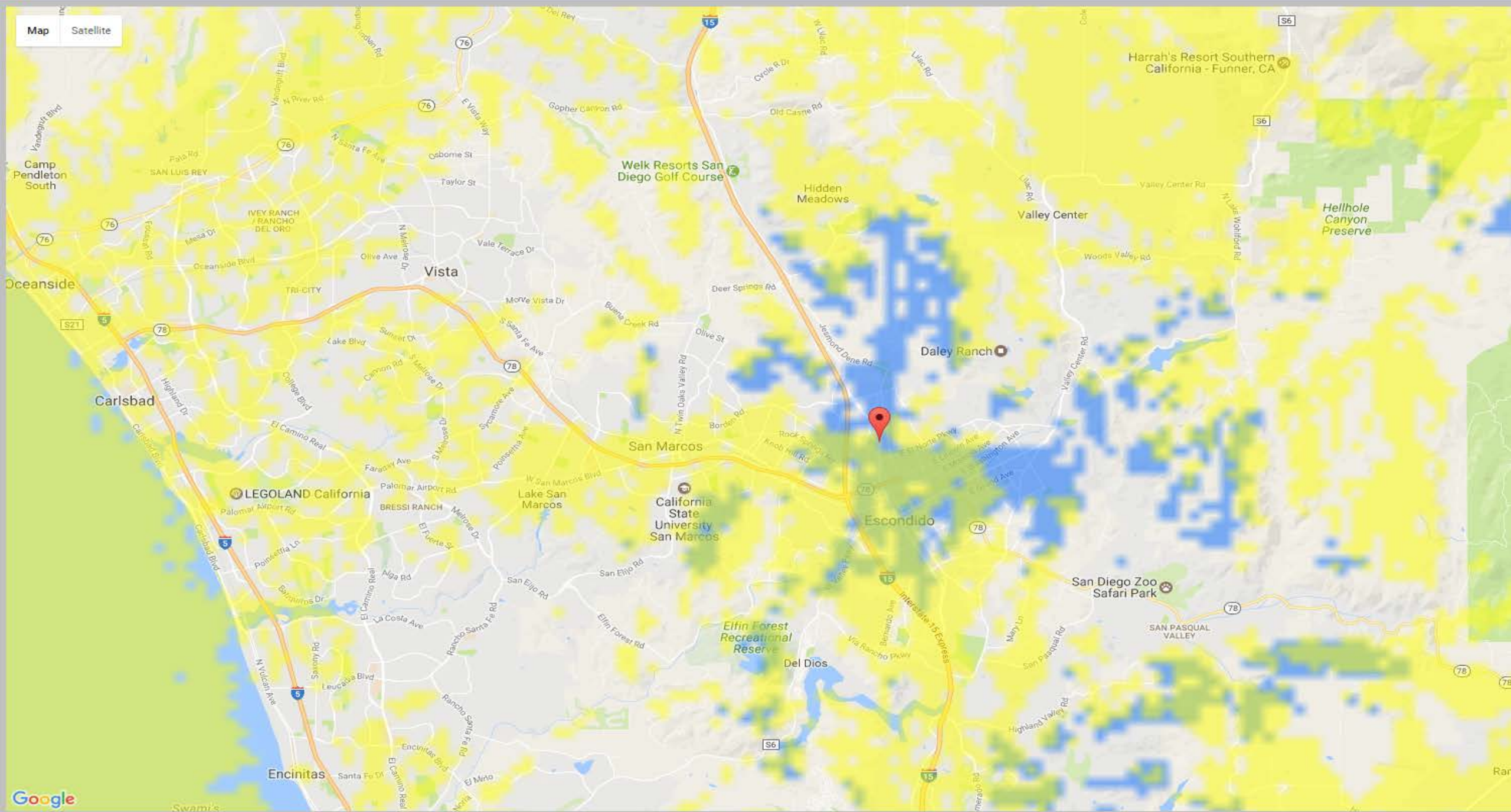
# Determine



- Suitable “relay” locations (RM Overlapping Coverage Analysis)







Centre Site	Palomar-Andre
Antenna Height (m above ground)	2
Antenna Type	AM-2G15-120-Vpol
Antenna Azimuth (°)	210
Antenna Tilt (°)	-2
Antenna Gain (dBi)	15

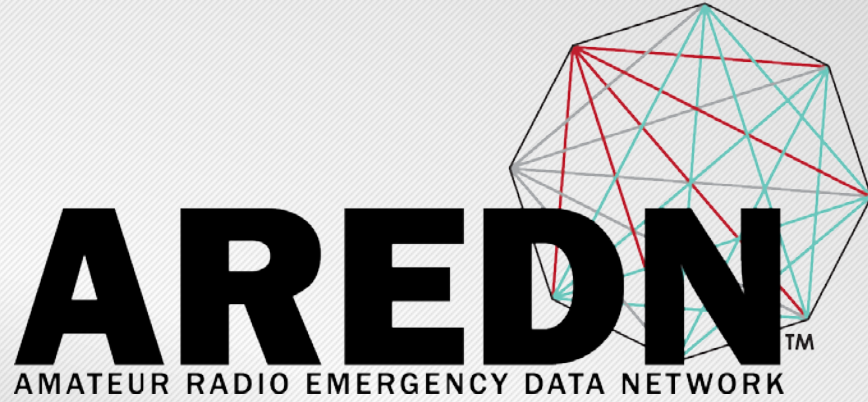
Mobile Antenna Height (m)	2
Mobile Antenna Gain (dBi)	21

Description	Palomar Coverage*
Frequency (MHz)	2310
Tx power (Watts)	0.25
Tx line loss (dB)	0.5
Rx line loss (dB)	0.5
Rx threshold (µV)	4
Required reliability (%)	70

Strong Signal Margin (dB)	10
Strong Signal Color	FFFF00
Weak Signal Color	FFFF00
Opacity (%)	50
Maximum range (km)	100
Rendering	Low resolution (Fast)
Use land cover	<input checked="" type="checkbox"/>
Use two rays	<input checked="" type="checkbox"/>







# Contact Info

Andre Hansen, K6AH  
[www.aredn.org/forum](http://www.aredn.org/forum)